

Lola B07/90 Sports 2000

Product Information





Lola B07/90 Sports 2000

Product Information

The Once and Future Winner

The all-new Lola B07/90 Sports 2000 is Lola's first design for a category it helped create – and came to dominate – in over a decade. The recent revitalisation of the class has prompted Lola's return with a chassis embodying the company's strength in both traditional and state-of-the-art race car construction.

The B07/90's recent race debut showed it to be a worthy successor to its illustrious ancestors in every way, taking a dominant pole position and a hard-fought victory from a 42-strong field including the latest design from Van Diemen. The B07/90's production specification is now being finalised with customer car deliveries commencing in November, allowing ample time for preparation and testing before the 2007 season.

Design Approach

The new car combines Lola's historic expertise in small sportscars with our proven one-make design approach to deliver a product which is both technically advanced and easy to run. Whilst designed around the Ford Duratec 2-litre inline-4 powerplant specified for Sports 2000, the chassis is also suitable for other engine configurations yielding up to 400 horsepower. The innovative suspension offers both responsive, predictable handling without adjustment for novices and comprehensive tunability for more experienced drivers. Stability when racing wheel-to-wheel and overtaking has been facilitated by adapting the aerodynamics of Lola's latest generation of race-winning Le Mans sportscars, also enhancing the car's visual appeal. A passenger can be accommodated in full comfort and safety, making the B07/90 sponsor- as well as customer-friendly.

Cost Control

To ensure low purchase and maintenance costs, no exotic materials are used in the car. Those components most prone to crash damage have been carefully designed for rapid replacement and minimum expense. Suspension uprights and other major components are engineered for longevity and easy servicing. The car uses a robust transmission offering proven reliability and affordable spares. It is anticipated that a team of two mechanics per car would be sufficient to handle all trackside preparation and repairs.

Product Applications

The performance level, easy driveability, and two-seater layout of the B07/90 make it suitable for a variety of applications beyond its eligibility for Sports 2000 competition. These might include passenger rides for sponsors, on-board driving school instruction, and 'Pro-Am' or 'Pro-Celebrity' events. The modular chassis design facilitates a wide range of engine options, and custom bodywork can be produced to suit client requirements.

The Lola B07/90 is based on the design philosophy used in Lola's successful Sports 2000 models of the 1970s and 1980s – a low-cost 'mini' Le Mans car.



Chassis Design and Specification

Key Dimensions

■ Overall length	4000 mm	■ Wheelbase	2550 mm
■ Overall width	1750 mm	■ Front/rear track	1500 mm
■ Overall height	1000 mm	■ Total weight	475 kg

Bodywork

- 6-piece bodywork in glass reinforced fibre over nomex honeycomb core
- Optional carbon composite bodywork
- Single-element aluminium rear wing adjustable for angle

Intensive development testing of the B07/90 began in August 2006



Chassis

- Monocoque construction with aluminium skins and honeycomb core
- Rollover hoop fabricated from 4130 steel
- Rack-and-pinion steering
- Pedal assembly and collapsible steering column adjustable for driver safety and comfort
- Optional passenger seat, seat belt harness, and headrest package
- 40-litre bladder-type FT3-specification fuel cell with space for larger fuel cell if required
- Quick-lift rear jack point

A victorious race debut followed at Silverstone in September 2006



Suspension

- Steel-fabricated double wishbones all round
- Wishbones designed to fail at bearing attachment in accident to prevent tub damage
- Pushrod/rocker activation of spring/damper unit at each wheel
- Simple anti-roll bar adjustment mechanism with easy access for bar changes
- Ride height, camber, and toe settings adjustable for each wheel
- Lightweight cast LM25 aluminium uprights front and rear
- Standard suspension set-up to be developed using Lola 7-post test rig

Brake System

- AP Racing ventilated steel brake discs 16 mm thick x 270 mm diameter all round
- AP Racing four-piston calipers all round

Wheels and Tyres

- 6" wide x 13" front and 8" wide x 13" rear wheel rims
- 160/515R13 front and 200/550R13 rear control dry and wet weather tyres

Engine Installation

- Chassis designed to accommodate inline 4 or other engine layout with up to 400 bhp
- Fabricated tubular steel engine mounting side frames to suit designated engine(s)
- Water radiator(s) in sidepods plus separate oil cooler to suit designated engine
- Electric fuel pump and line filter

Transmission

- Elite five-speed sequential-shift longitudinal gearbox standard with Hewland LT optional
- Limited slip differential standard
- Cast aluminium bellhousing incorporating starter motor and engine oil tank

Electrical System

- Basic chassis and engine wiring looms
- 12-volt high-power on-board battery for engine starts plus jump battery/recharger plug

Lola B07/90 monocoque chassis and front suspension, engine bay, and rear suspension detail



Costs and Support

Price

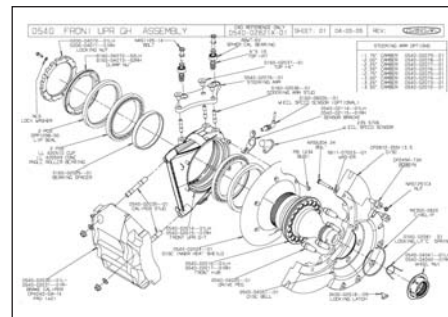
- Race car rolling chassis unit price on application
- Discount pricing available for multi-car orders based on volume

Terms and Conditions

- Rolling chassis price does not include the following items specified by series organisers:
 - Engine
 - Engine control unit
 - Clutch assembly
 - Wheels and tyres
 - Data acquisition system
 - Electronic instrument display
- Price subject to changes in series specifications and regulations
- Price in GBP ex-works Lola Cars International in UK
- Production car delivery to commence in October 2006

Customer Support

- Dedicated Lola engineer available at all races and selected test sessions
- Regular technical bulletins and data issued to series organisers and teams
- Spares sales and distribution arranged to requirements of series organisers



Contact Information

Lola Cars International Ltd

Lola House, Glebe Road, St Peter's Road
Huntingdon, Cambridgeshire PE29 7DS
United Kingdom

Telephone 44 + (0)1480 451301
Facsimile 44 + (0)1480 482976
Mobile 44 + (0)7766 718746
Email ssmith@lolacars.com
Website www.lolacars.com

